



## 20 Pembroke Place BELROSE NSW

4 3 2

A very well presented property which has spacious interiors and a flexible floor plan. Located in a family friendly cul-de-sac and quiet location, it is a short stroll to all local amenities. It is sure to impress with new kitchen, new paint and new carpet throughout. Features include:

- Four bedrooms + study, three bathrooms (main en-suite)
- Spacious living areas include. Formal entrance, lounge and dining upstairs opening onto patio in front and alfresco deck at the back, huge family room and separate rumpus downstairs
- Brand new top of the range light filled kitchen with walk-in pantry and island bench opening to North facing deck for alfresco dining
- Separate laundry
- Double lock up garage with auto door, internal access and

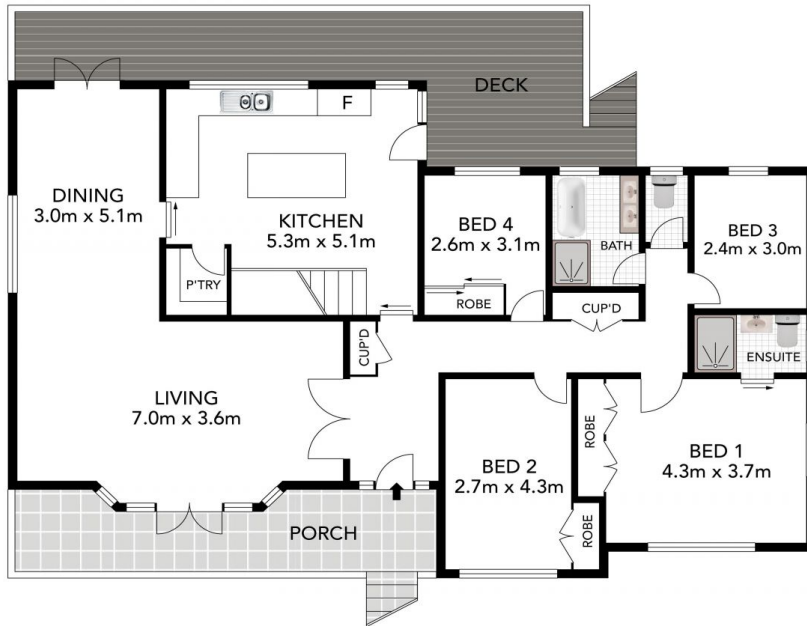
**Type** : House

**View** : <https://www.oneagencyhazlettpoole.com.au/lease/nsw/northern-beaches/belrose/residential/house/7921666>

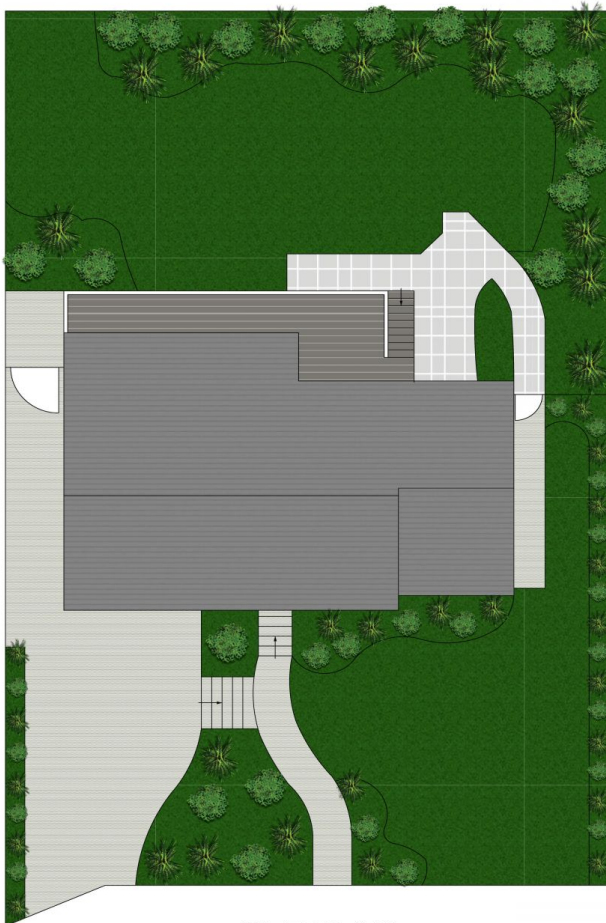


**Robyn Hazlett-Poole**  
02 8038 1200

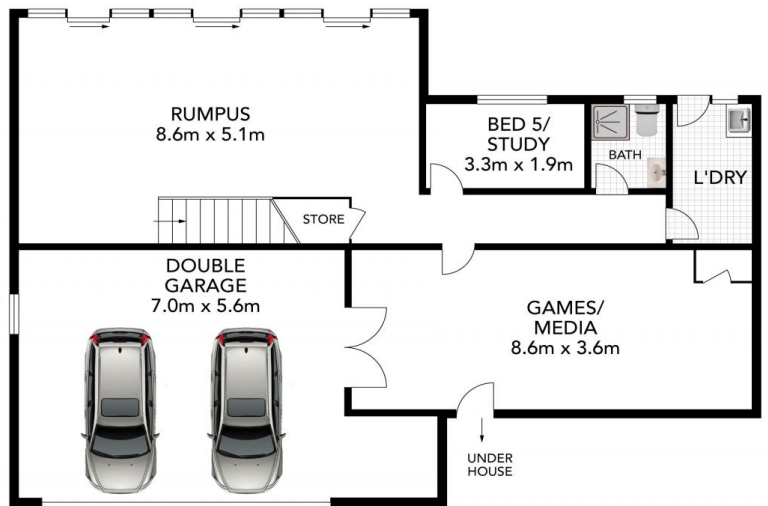
[For full version visit the website](https://www.oneagencyhazlettpoole.com.au)



GROUND LEVEL



SITE PLAN



LOWER LEVEL

**BELROSE**  
**20 PEMBROKE PLACE**  
\*INTERNAL FLOOR AREA APPROX 292m  
INCL GARAGE



\*PLANS SHOWN ONLY INDICATIVE OF LAYOUT. DIMENSIONS RE APPROXIMATE.  
This floor plan is provided for indicative purposes only. Measurements are approximate and not to scale.  
The vendor, agency and supplier will accept no liability for its accuracy. Interested parties are advised to make their own independent inquiries.

