



70 Parkes Road COLLAROY PLATEAU NSW

6 3 4

Dedicated to a lifestyle of relaxed family living, this substantial home has something for everyone. With six bedrooms, three bathrooms and loads of parking an inspection of this home is a must.

Special features include:

Dedicated childrens wing with four bedrooms and bathroom.

Parents retreat with ensuite and private balcony to enjoy the sunsets.

Living area, with gas fireplace, opens to large Merbau deck with vast district views.

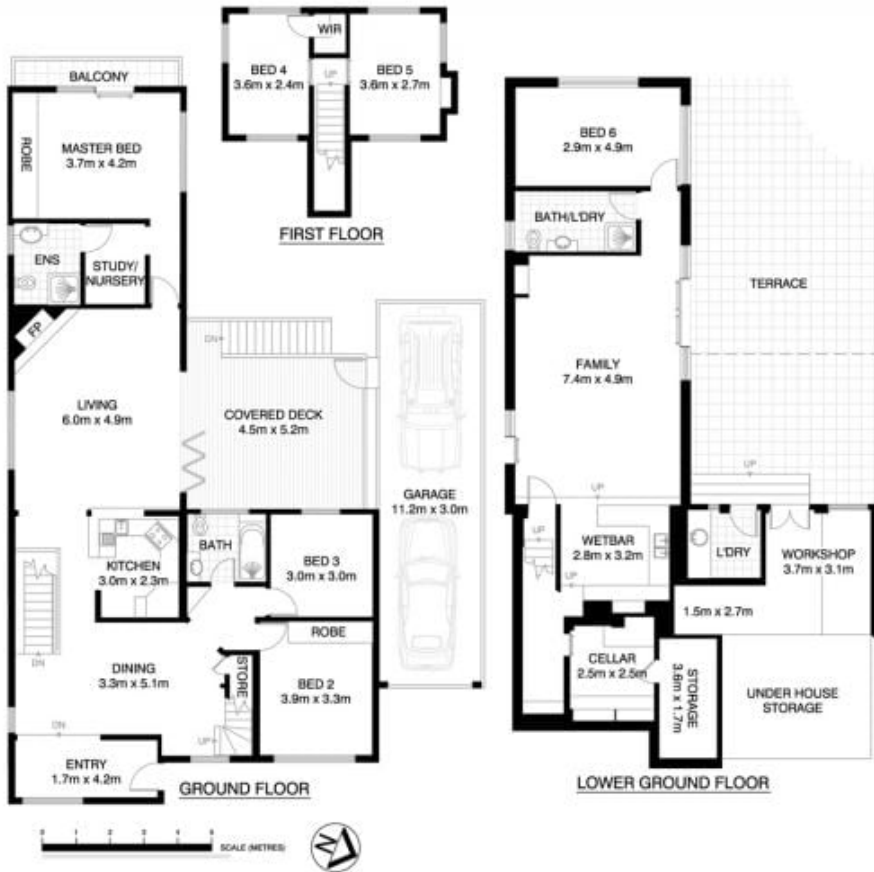
Downstairs living area flows out to the paved entertainment and BBQ area.

Type : House
Land Size : 696 sqm
View : <https://www.oneagencyhazlettpoole.com.au/sale/nsw/northern-beaches/collaroy-plateau/residential/house/7921870>



Robyn Hazlett-Poole
02 8038 1200

[For full version visit the website](https://www.oneagencyhazlettpoole.com.au)



COLLARROY PLATEAU
 70 PARKES ROAD
 *INTERNAL FLOOR AREA APPROX 280m²

*PLANS SHOWN ONLY INDICATIVE OF LAYOUT. DIMENSIONS ARE APPROXIMATE.
 Floor plan supplied by V-Mark Design Pty Ltd. This floor plan is provided for indicative purposes only.
 Measurements are approximate and not to scale. The vendor, agency and supplier will accept no liability for its accuracy. Interested parties are advised to make their own independent enquiries.